

WINDSOR HOUSE

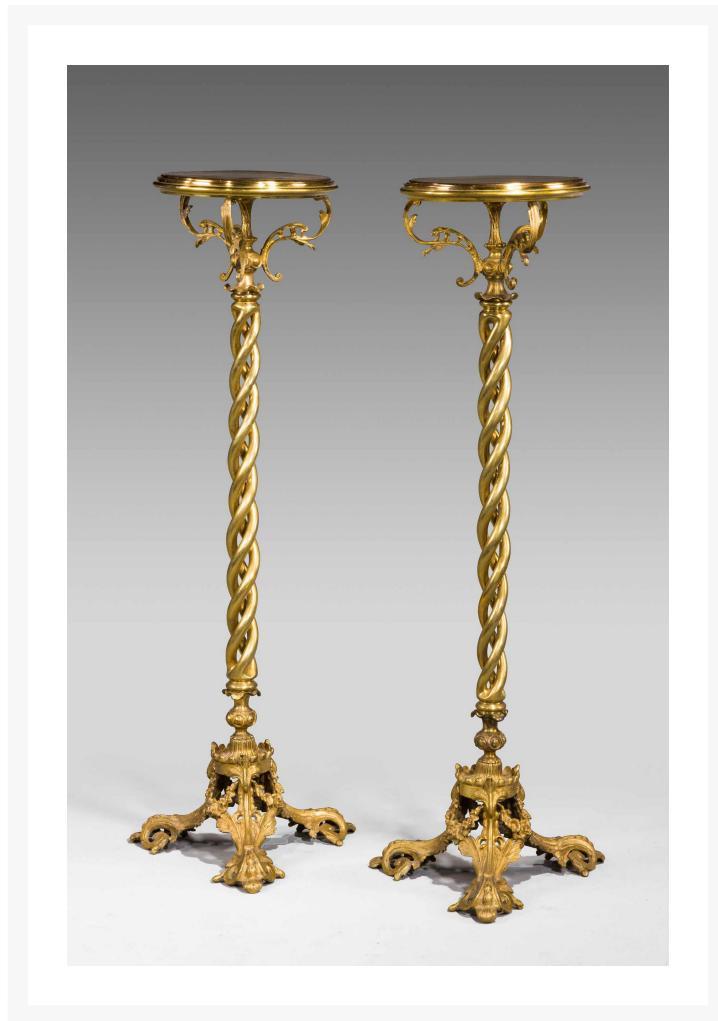
ANTIQUES

Pair of 19th Century Torcheres

£3,950

REF: 4209

Height: 116.84 cm (46") Width: 40.64 cm (16") Depth: 30.48 cm (12")



Description

An unusual pair of 19th century cast bronze and gilded bronze torchères, the spiral centre sections under dish tops above arms with three cast swan necks, the bases gilded and elaborately cast and chiselled.

More Information

Year	c. 1870
Country	England
Provenance	Torchères were used as stands for candelabra and were usually placed in pairs on either side of a table or in the corners of a room. For a very good example see Thomas Chippendale's original drawing circa 1760 for a torchere in the George Lock collection